

FRONT VIEW

**READ ALL INSTRUCTIONS BEFORE BEGINNING INSTALLATION**

INSTALLATION INSTRUCTIONS

- 1- REMOVE THE EXISTING SUN VISOR.
- 2- REDRILL EXISTING HOLES TO 1/2 in. AND INSERT WELLNUTS.
- 3- INSTALL THE BRACKETS ONTO THE CAB.
- 4- TEMPORARILY INSTALL THE SUN VISOR AS ILLUSTRATED
- 5- USING THE SUN VISOR, MARK OUT HOLES ON BOTH ENDS OF SUN VISOR.

**ATTENTION**

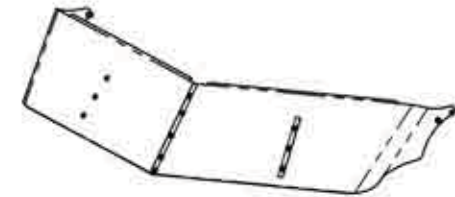
**REMOVE SUN VISOR BEFORE DRILLING TO PREVENT DAMAGE**

- 6- DRILL THE PREVIOUSLY MARKED OUT HOLES AT 1/2 IN. DIA.
- 7- INSERT THE WELLNUTS.
- 8- IF WITHOUT LIGHTS; SKIP TO STEP # 12.
- 9- INSTALL THE LIGHTS ON SUN VISOR
- 10- CONNECT THE LIGHTS AND DIRECT WIRE TOWARDS CENTER.
- 11- FASTEN THE SUN VISOR USING THE FASTENING HARDWARE.
- 12- REINSTALL THE SUN VISOR ON THE CAB.

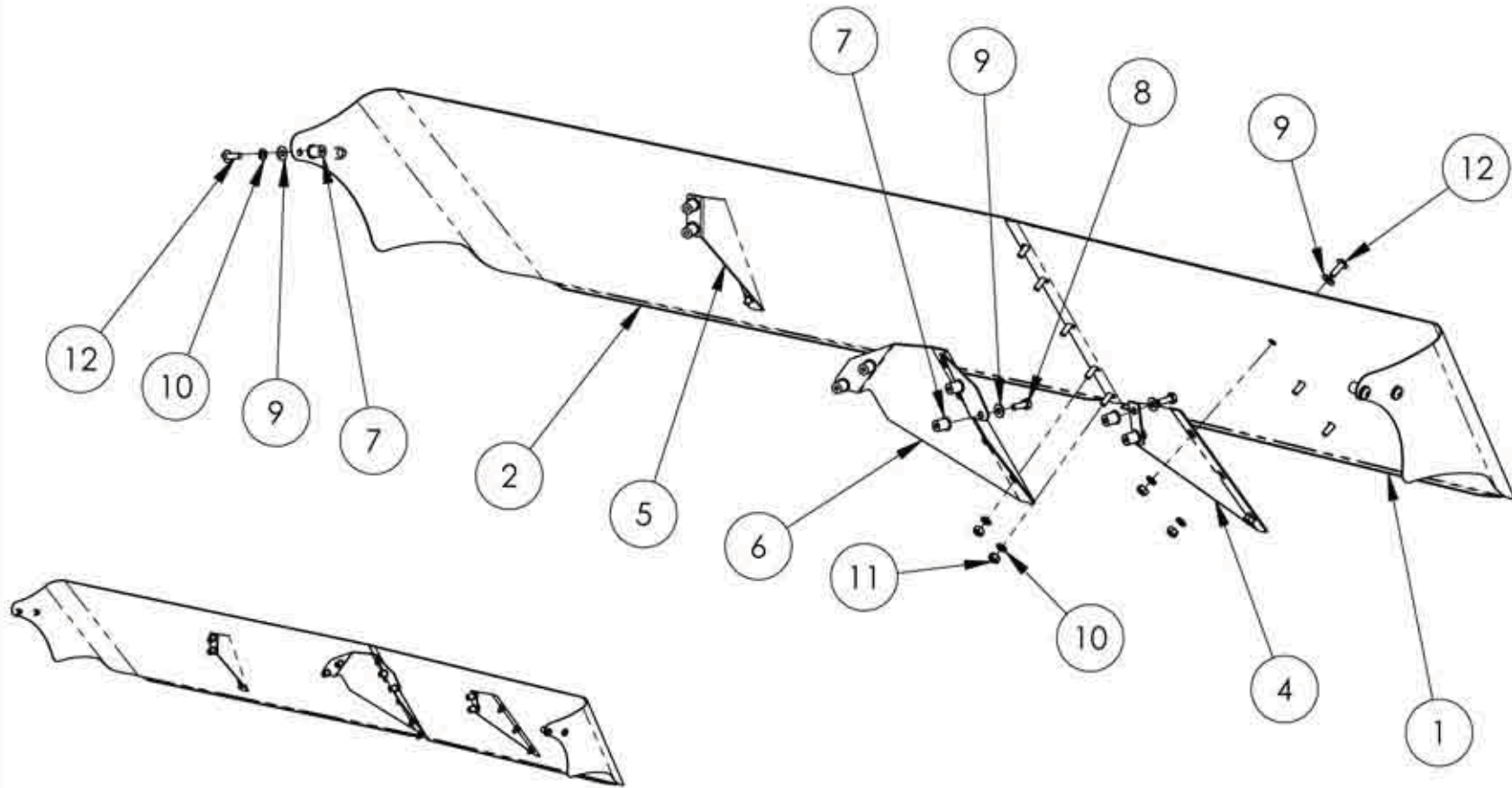
**CAUTION**

**IT IS THE RESPONSIBILITY OF THE INSTALLER TO PLAN AHEAD THE ADEQUATE ELECTRICAL CONNECTION ACCORDING TO THE STANDARDS OF THE TRUCK MANUFACTURER AND DOT REGISTRATION.**

- 13- CONNECT LIGHTS HARNESS TO THE TRUCK.
- 14- TIGHTEN ALL BOLTS AND SCREWS FIRMLY.



TRUX ACCESSORIES			
TITLE: SUN VISOR LOW ROOF PETERBILT 379 - UP TO 2004			
SIZE <b>A</b>	DWG. NO. <b>TSUN-P17, P18, P19</b>		
NAME	DATE	REV	DATE
DRAWN BY P.W.	26-09-2008	PH1	-
SCALE: 1:24		WEIGHT: LBS	SHEET: 1 OF 1



ASSEMBLY BACK VIEW

ITEM NO.	PART NO.	PART NO.	PART NO.	DESCRIPTION	QTY	<b>TRUX ACCESSORIES</b>				
1	M7131002SD	M7131005SD	M7131006SD	RH SUN VISOR PANEL	1	TITLE: SUN VISOR LOW ROOF PETERBILT 379 - UP TO 2004				
2	M7131002SG	M7131005SG	M7131006SG	LH SUN VISOR PANEL	1					
3	K7131002BH	-	-	HARDWARE KIT INCLUDES	1					
4	-	-	-	PR9131002-D00	1	SIZE	DWG. NO.			
5	-	-	-	PR9131002-G00	1	<b>A</b>	<b>TSUN-P17, P18 &amp; P19</b>			
6	-	-	-	PR9131002-C00	1		NAME	DATE	REV	DATE
7	-	-	-	WELL NUT 1/4"-20NC	12	DRAWN BY	P.W.	26-09-2008	PH1	-
8	-	-	-	HEX. BOLT 1/4NC X 3/4"	8	SCALE: 1:16	WEIGHT: LBS		SHEET: 1 OF 1	
9	-	-	-	FLAT WASHER 1/4"	23					
10	-	-	-	LOCK WASHER 1/4" SS	15					
11	-	-	-	HEX NUT 1/4-20NC	11					
12	-	-	-	TRUSS PHILIPS 1/4" X 3/4" SS	15					